

SnapSafe®

A Hornady® Company

SnapSafe® Under Bed Safe

MEDIUM
26"x20"x6"
Item No. 75403



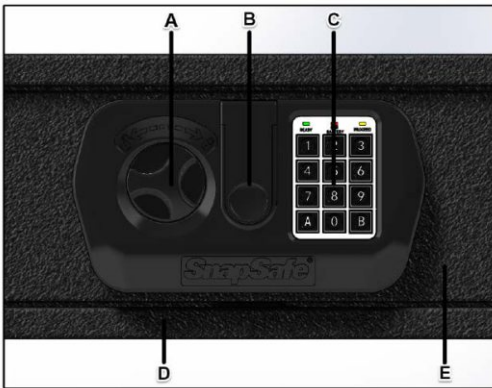
Read this manual carefully and never store it inside the safe!

SnapSafe[®] Under Bed Safe

PACKAGE CONTENTS

- One** – Steel Security Safe
- One** – Operation Manual
- Two** – Override Access Keys
- Two**– Handles W/Fasteners
- Additional items needed:**
- Four**– “AA” Batteries

PRODUCT OVERVIEW



- A** - Safe Entry Knob
- B** - Override Key Cover
- C** - Electronic Digital Keypad
- D** - Safe Cabinet Body
- E** - Safe Door Assembly

SnapSafe[®] Under Bed Safe MEDIUM

Item No. 75403

Exterior: 26"W x 6"H x 20"D

Interior: 22.9"W x 4.4"H x 17.1"D

Weight: 60 lbs

Power: 4 AA batteries

SETUP

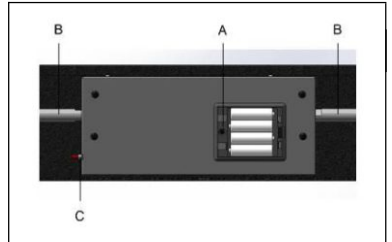
STEP 1. Open Safe With Override Key

1. Insert and rotate override key to unlock.
2. Turn knob to left and open the safe door.
3. Do **not** store keys in safe.



STEP 2. Install Batteries

1. Remove the battery cover inside the door by removing screw.
2. Insert 4 AA batteries and replace the battery cover.
3. Do not close the door before testing digital lock.

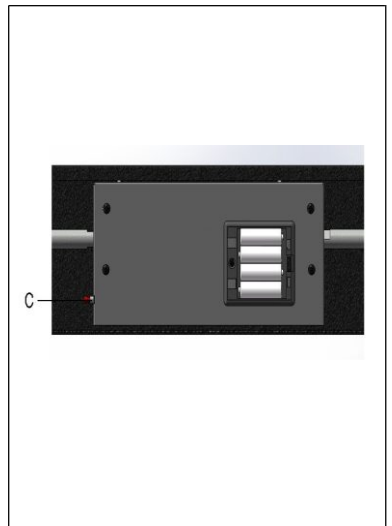


STEP 3. Program First Passcode

1. Open safe door with override key.
2. Press the red reset button (C) inside the door. The safe will beep twice and the yellow light on the keypad will turn on.
3. Enter new passcode (3 to 8 digits) within 10 seconds followed by "A".
4. The safe will beep twice and the yellow light will turn off. With the door open, verify the correct code is programmed by entering code followed by "A". The motor should activate when the correct code is entered. If not, repeat steps above.

STEP 4. Program Second Passcode

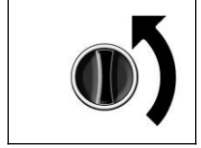
1. Keep door open.
2. Press "0" on the keypad twice, then press the red reset button (C) inside the door. The safe will beep 3 times and the yellow light turns on.
3. Enter new passcode (3 to 8 digits) within 10 seconds followed by "B".
4. The safe will beep twice and the yellow light will turn off. With the door open, verify the correct code is programmed by entering code followed by "B". The motor should activate when the correct code is entered. If not, repeat steps above.



OPERATION

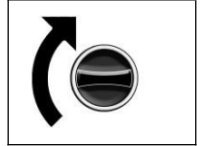
TO OPEN THE SAFE

1. Enter either first or second passcode followed by "A" or "B".
2. The safe will beep twice and the green light turns on.
3. Rotate the knob to the left and open the door.



TO CLOSE THE SAFE

1. Close the door and hold it in the closed position.
2. Rotate the knob to right to engage the lock bolts to lock the safe.



SECURE LOCKOUT PERIODS

1. If three wrong passcodes are entered, the safe will beep and the keypad will deactivate for 20 seconds. The safe can only be opened with the manual key during this time.
2. If three wrong passcodes are entered again, the safe will beep and the keypad will deactivate for 5 minutes. The safe can only be opened with the manual key during this time.

LOWER BATTERY WARNING

If the battery power becomes low, both the green and red lights on the keypad will illuminate after a code is entered. Replace batteries immediately with quality batteries to ensure proper operation.